

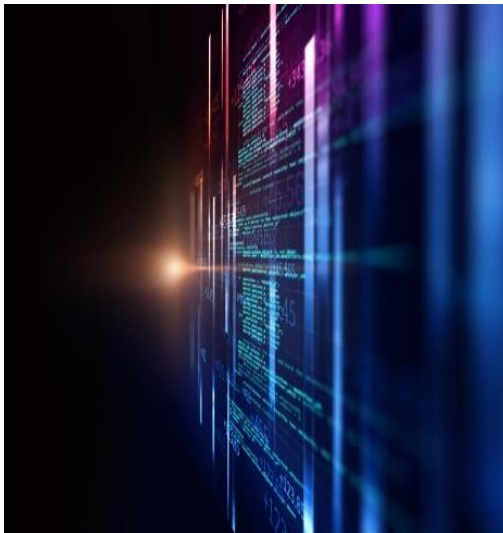


BioMedical Informatics Unit (BIU)

Core Overview:

The Biomedical Informatics Unit (BIU) of the Morehouse School of Medicine (MSM) RCMI Center of Excellence for Clinical and Translational Research (R- CENTER) and G-12 programs focuses on integration of MSM and affiliated health information systems -- electronic medical and personal health records, patient databases, and other research databases (basic, translational, clinical and population-based) -- into an interpretable repository. The unit also focuses on bioinformatics analysis that includes, but is not limited to identification of genetic biomarkers for tangible diagnostic applications, analysis of gene expression data gathered from multiplatform microarrays (Agilent, Affymetrix, etc) as well as provides analysis and consultation related to various expression profiling technologies which include RNA, miRNA, ChIP-on-Chip, and Antibody microarrays and post-hoc analysis of SNP and SAGE data. Please visit the R-Center Research WebPorrtal at <https://rcenterportal.msm.edu/> for more information, and to request for services.

SERVICES PROVIDED (BIU TECHNOLOGY/EQUIPMENT SERVICES)



Biomedical Training Support	Proposal/Database Development
Study Design	I2b2 Workbench Training/Access/Data Access
REDCap Training/Access	Software Application Support
Biomedical Analyses Support	Database Development
Studio Consultation	Project Assistance
Silicon Genetics	GeneSpring GX Workgroup Server
Spotfire and Genesifter	Array STAST
Genomics Analyses	Pathways 4/Igenuity Pathways Analysis

User Fees (if applicable): \$60/hr-\$100/hr

Contact : Biomedical Informatics Support Team

Dr. Alema-Mensah, *Database Administrator/REDCap Administrator*

email: eamensah@msm.edu office: 404-752-1623

Dennis Bryan, *Programmer Analyst*

email: dbryan@msm.edu office : 404-756-8803

Ruvina Silva, *Database Administrator*

email: ksilva@msm.edu office: 404-756-8912

Helen Tyree, *Web Portal Administrator/REDCap Administrator*

email: htyree@msm.edu office: 404.756-8820



720 Westview Dr. SW
Atlanta, GA 30310
404.752.1500
www.msm.edu